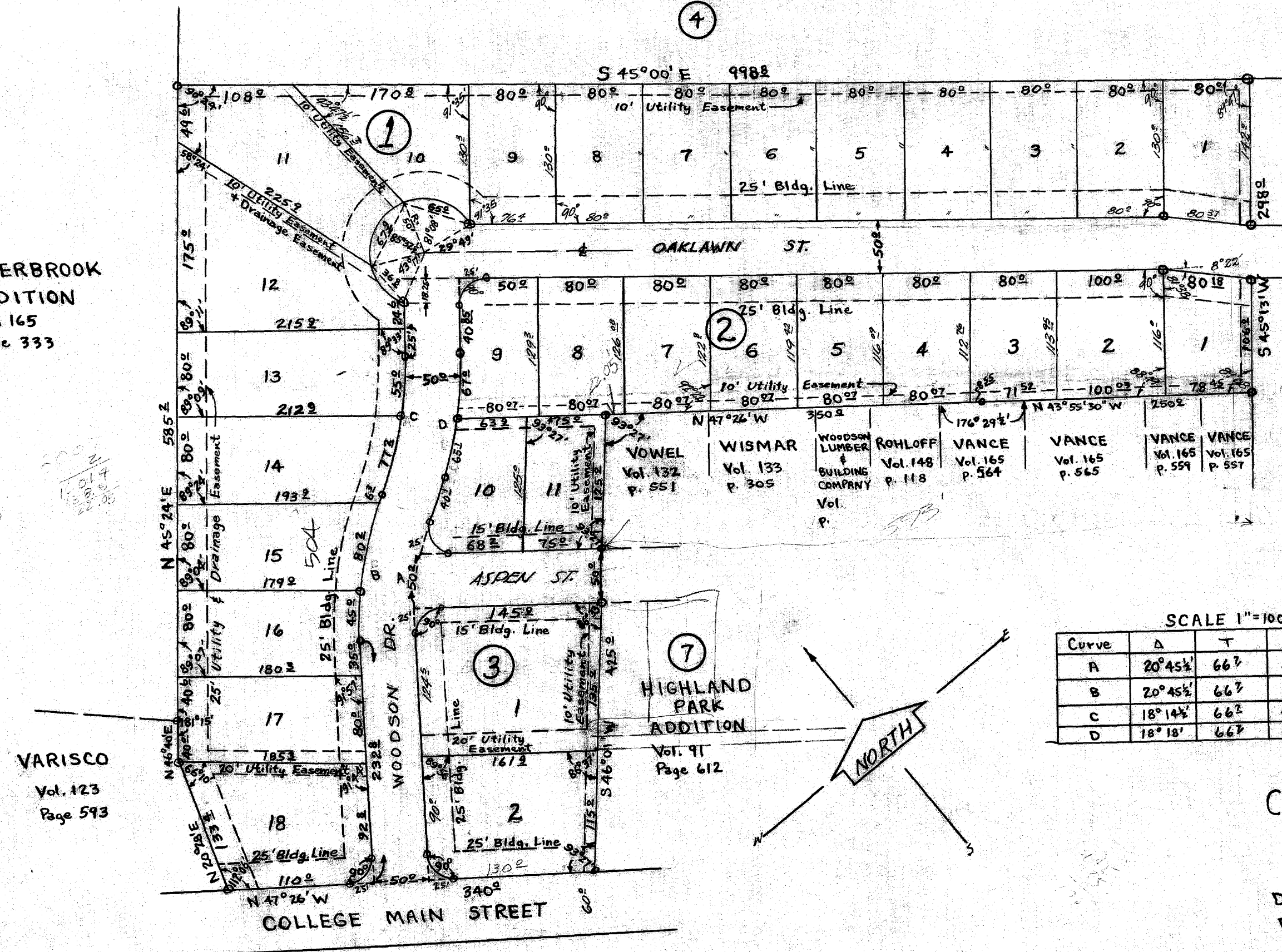


OAK TERRACE ADDITION  
Vol. 151  
Page 547

BORDERBROOK  
ADDITION  
Vol. 165  
Page 333

HIGHLAND  
PARK  
ADDITION No. 2  
Vol. 166  
Page 165



SCALE 1"=100'

Curve	Δ	T	R	D	L
A	20°45'	66.7	364.2	15°48'	131.2
B	20°45'	66.7	364.2	15°48'	131.2
C	18°14'	66.2	415.55	13°48'	132.2
D	18°18'	66.7	414.1	13°52'	132.2

College Oaks Addition  
Bryan, Texas  
November, 1956  
D.R. - Vol. 177  
Page - 607  
Scale: 1"=100'

Note: All lot corners are marked with steel rods,  
and all ends of curves and block corners are  
marked with concrete monuments. - ⊙  
All distances on curves are chord distances.

on balance  
and  
initials